

SUMMER EDITION • JUNE 2023

LUMIN ST. LOUIS

ECUMENICAL CAMPUS MINISTRY SERVING THE ST. LOUIS AREA

GRATEFUL

BY PASTOR TINA REYES

The spring semester has finished and so has my third program year. And all I can do is find myself grateful for this ministry.

Grateful – for the students who asked questions, showed up for dinner, prayed for one another, laughed until they cried, and became family in whatever shape or numbers gathered at any given time. For those who have graduated, I will miss their energy and the joy of watching them grow. For the ones coming back – its gonna be amazing.

Grateful – for all of the folks who support campus ministry in prayer, with dinner, with financial donations, for attending my first in-person fundraiser with y'all. Campus Ministry is community ministry and your support is amazing.

Grateful – for all the churches that support campus ministry. For your financial support and your folks who provide snacks, hygiene supplies, and other wish list items.

Grateful – for the board of directors who help to shape and refine campus ministry, who edit copy and videos, who show up to host big and small events. They also came to help Sunday nights this year and that was great for all of us.

Grateful – for Wash U and SLU and their welcome of campus ministry on campus. Rev. Callista Isabelle and Dr. Sue Chawszczewski for the collegiality and collaboration for all these university students.

Grateful – for this ministry, community, and city that I now call home. I am truly blessed and honored to be the campus pastor at LuMin St. Louis.

In Peace,

Pastor Tina she/her/ella

YOU & CAMPUS MINISTRY

THE RETURN OF TRIVIA NIGHT

After a long hiatus, LuMin St. Louis hosted a rousing night of trivia and fellowship on February 2. We had 17 tables of players who brought food and fun to the fellowship hall of Bethel Lutheran Church. We raised \$7500, which helped support our immersion trip to Puerto Rico in March. LuMin St. Louis is already planning the 2024 Trivia Night, with more details coming soon.

UPDATING OUR DATABASE

We are upgrading our software programs, including our master database of supporters, alumni, and current students. Please support this effort by opening this [Google Form](#) to update your current information, including your email address. We ask that you update the form, which should take less than five minutes, by August 31, 2023.

SUPPORT CAMPUS MINISTRY

The majority of LuMin St. Louis' operating resources – more than two-thirds – comes from your generosity and support of our fundraisers or responding to our letter appeals. There are still more ways to financially support this amazing ministry:

- One-time/monthly on [PayPal](#)
- [Thrivent Choice Dollars](#)
- Legacy Gift



Refer a Student to LuMin Network Campus Ministry

Do you have or know a college student? Might they be interested in campus ministry? Not sure how to make the connection? The LuMin Network, the campus ministry network of the ELCA, has a link to share your college person's info with the campus ministry or congregation where your person attends. Please share the link with all the college students you know.



Spring Retreat

The spring retreat brought Rockwell House and LuMin St. Louis to the DuBois Center in Nashville, IL. The theme, as we entered the season of Lent, was "Only Human" where we worked towards understanding our own humanity--sin and forgiveness, death and resurrection. The students took walks, shared questions about these important faith ideas, and enjoyed time away from the assignments and exams of spring semester.



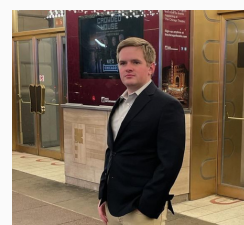
Immersion Trip to Puerto Rico

Six young folks joined Pastor Tina on a faith and immersion experience to Puerto Rico in March, learning about economic and health justice. For six days, the group visited people and places all over the island, viewing urban and rural landscapes, beaches and El Yunque, a tropical rain forest. The young adults met with Bishop Idalia Negrón of the Caribbean Synod of the ELCA and Alexa & Arnaldo of Finca Remedio, debating the roles of tourism and environment, and learning how faith institutions have played a significant role in repairing the island after hurricanes and corrupt governments.

Here's a [video of our trip](#) as told by the students .

Celebrating Class of 2023

- The following students completed their studies and graduated in May. We wish them so much love as they start their new careers:
- *Evan Zhong* – Bachelor of Arts in Computer Science, Washington University. Evan has relocated to San Francisco where he works for a software development company.
- *Sarah Wilson* – Bachelor of Arts in Environmental Earth Science, Washington University. Sarah is currently working for the John Danforth Plant Science Center, working on the farm in St. Charles.
- *Jacob Chow* – Bachelor of Arts in Secondary Education, Washington University. Jacob is headed to Maryland to teach middle school social studies and science.
- *Cecelia Anderson* – Bachelor of Arts in Mathematics & Linguistics, Minor in Computer Science, Washington University. Cecelia is taking her skills and passions to Chicago. Watch out, Windy City!
- *John Schaller* – Masters of Arts in Student Affairs, St. Louis University. John is currently interviewing with many universities for a position supporting students.



LuMin St Louis Covenant Churches: Bethel Lutheran, University City & Grace UMC, St. Louis **LuMin St. Louis Partner Churches:** Atonement, Florissant; Christ Community, Columbia; Christ Lutheran, Webster Groves; Family of Christ, Arnold; Gethsemane, St. Louis; Holy Cross, Creve Coeur; Holy Trinity, St. Louis; Hope, St. Charles; Living Lord, Lake St. Louis; Lutheran Church of the Good Shepherd; Lutheran Church of the Living Christ, Florissant; St. Mark, Belleville; St. Mark's, Clayton; St. Philip's, St. Louis; Trinity, Chesterfield; Trinity, Kirkwood; Unity, Bel-Nor; Zion, Ferguson